



The Foundry 35A Woodthorpe Road, Ashford, TW15 2AZ

£375,000

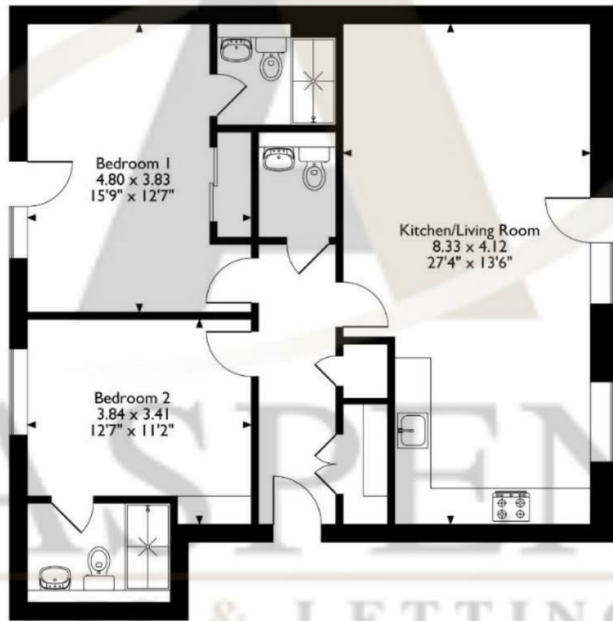
# The Foundry 35A Woodthorpe Road, Ashford, TW15 2AZ

A superbly presented two double bedroom, two bathroom first-floor apartment, ideally located just off the High Street and only moments from Ashford railway station. This bright and spacious home features a stylish open-plan lounge/kitchen with dining area, two generous double bedrooms including en-suites to both plus an additional W.C. Further benefits include residents' parking, a long lease and reasonable service charges. An ideal purchase for first-time buyers, commuters or investors seeking a prime, central location with excellent transport links and amenities on the doorstep.



# Floor Plan

The Foundry, 35A Woodthorpe Road, Ashford, Surrey  
 Approximate Gross Internal Area  
 81 Sq M/872 Sq Ft



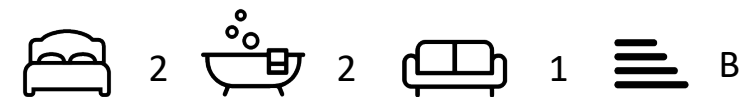
**Ground Floor Flat**

Please note that the location of doors, windows and other items are approximate and this floorplan is to be used for illustrative purposes only. Unauthorized reproduction is prohibited.



## Features

- Two double bedroom first-floor apartment
- Immaculately presented throughout
- Ample built-in storage
- Long lease and very reasonable charges
- Prime position just off High Street
- Two en-suite bathrooms plus additional WC
- Spacious open-plan lounge through kitchen with dining area
- Residents' parking
- An ever popular gated development
- Located moments from train station.



Tenure - Leasehold Council Tax Band -

Aspen Residential Services  
 77 Church Road, Ashford, Surrey, TW15 2PE  
 Tel: 01784 252 202  
 Email: enquiries@aspensalesandlettings.com

